

Forest

Acoustic Screen

Designed by Stiwood



Product Sheet / **Forest**

Forest

Forest sound-absorbing floor panels are inspired by the natural shape of trees. When put together, these panels take on the shape of a forest. To connect even more with nature, the panels can be specified in the typical colors of spring, summer and autumn.

*Shown Above:
Forest Tall in Yellow Green
Forest Short in Ochre
Recycled Polyester Fiber
Oak (Laminated MDF)*



Forest is imported and requires a 10-12 week lead time.

General Information

Material

Panel: Recycled Polyester Fiber
Base: Oak (Laminated MDF)

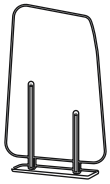
Options

Panel Colors: Green, Yellow Green,
Dark Green, Ochre

Environment

Suitable for Any
Indoor Environment.
100% Recyclable

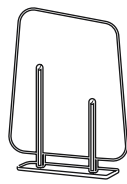
Dimensions (in)



Forest Tall

Acoustic Screen

W 33.5 x D 11.5 x H 65.0



Forest Short

Acoustic Screen

W 33.5 x D 11.5 x H 49.5

Estimated Weight

Forest Tall has an estimated weight TBD.
Forest Short has an estimated weight TBD.



Ready-to-Assemble Design

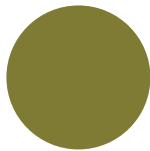
Acoustix Screens are flat packed for convenient shipping.
Assembly is simple with minimal hardware.

Finishes

Recycled Polyester Fiber Panels



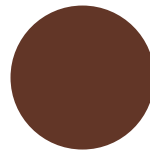
7522 Green



3508 Yellow Green



7507 Dark Green



4530 Ochre

Wood Colors



Oak (Laminate)



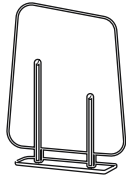
Ash

Forest Pricing



Forest Tall
Acoustic Screen

List Price: \$1,900



Forest Short
Acoustic Screen

List Price: \$1,700



Product Sheet / **Forest**

 All images shown can be found online at [sixinchusa.com](https://www.sixinchusa.com)

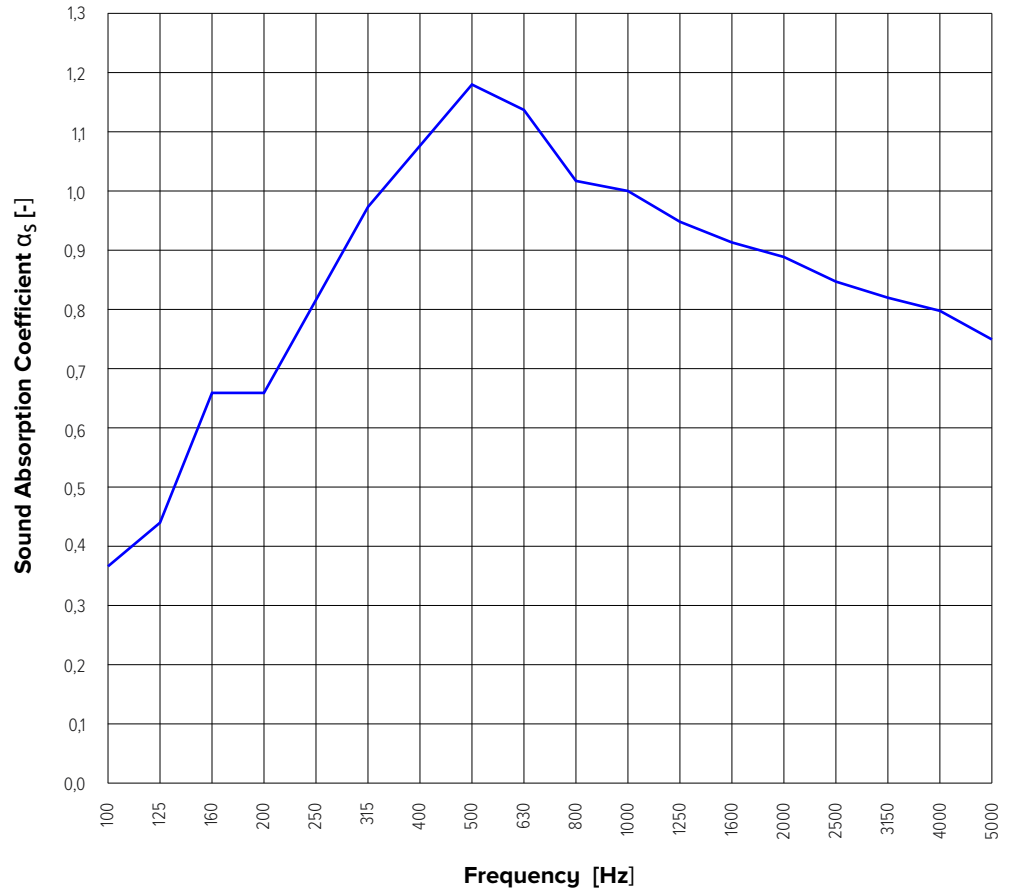


Product Sheet / **Forest**

 All images shown can be found online at [sixinchusa.com](https://www.sixinchusa.com)

Sound Absorption

Freq [Hz]	α_s [-]
Frequency	Acoustic Absorption Coefficient Values
100	0.35
125	0.44
160	0.67
200	0.67
250	0.80
315	0.97
400	1.07
500	1.19
630	1.14
800	1.02
1000	1.00
1250	0.94
1600	0.91
2000	0.89
2500	0.85
3150	0.83
4000	0.80
5000	0.75



Sample Area: 11.47m²
 Reverberation Room Value: 161.3m³

Product Sheet / Forest

Service / Warranty

Servicing

Damaged components in need of replacement require an image of the damaged part and a reference to your order number. Please email this information to **support@sixinch.us** and we will be happy to provide replacement options.

* Visit sixinchusa.com/warranty for details on service and warranty terms and conditions.

Warranty

Wood, steel, aluminum, plastic components, molded PE applications shall be free from defects in materials and workmanship for a period of five (5) years from the date of purchase. Softening of foam will occur through normal use and is not a manufacturing defect.



Quote

Online

Visit sixinchusa.com, create an account and submit your quote. A customer service representative will be in touch to guide you through the purchasing process or put you in touch with your regional rep.

Phone / Email

Call **855-577-2417** or email support@sixinch.us. Your regional rep contact information can also be found at sixinchusa.com/connect.

Brand Promise

We offer our customers endless creativity, backed by generations of industry experience. We deliver through quality, creativity and flexibility. We're here to help you create, entertain and work (a little). For more information visit sixinchusa.com or call us at **855-577-2417**.



SIXINCH® North America
901 East Madison Street, Goshen, IN 46528
855-577-2417
support@sixinch.us