

WRAPZ

Block 2

Designed by SIXINCH USA



Product Sheet / **WRAPZ - Block 2**

WRAPZ - Block 2

Wrapz are a creative way to infuse your design into contract furniture. Our custom printed furniture allow creators to use their brand visuals on specified SIXINCH™ furniture pieces. We currently offer the Wrapz program for the following: Block, Block 2, Bubble, Gnarly Low Back and Gnarly High Back. Wrapz are perfect for educational spaces, events and corporate branding.

Shown Above:
Straw Seat
Fabric
Wood Base w/Glides

General Information

Material

Seat: Printed Vinyl or Fabric
Base: Wood Base and Glides
or Zipper

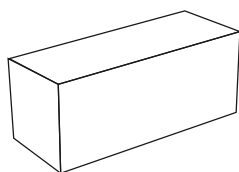
Options

Shapes: Bubble 1, Block 1 and 2
Print: Standard or Custom

Environment

Suitable for Any Indoor
Environment.

Dimensions (in)



WRAPZ

Block 2

SH 18.0 x D 36.0 x H 18.0

Estimated Weight

The Wrapz - Block 2 estimated weight is 30lbs.

** Actual weight is based on base option selected.*

Create-Your-Own

1. Material



Vinyl



Fabric

2. Base

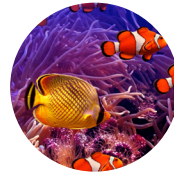


Wood Base
w/ Glides



Zipper

3. Pattern



Standard



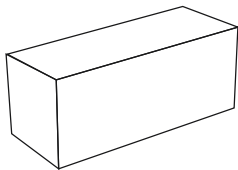
Custom

- **All prints require a (5) piece minimum order.**
- All (5) pieces have to be the same shape and base, but can be different prints.
- Custom artwork will yield a \$250/net charge.
- Lead time for standard prints is 6 weeks. Custom artwork extends lead time.



Product Sheet / **WRAPZ - Block 2**

WRAPZ-Block 2 Pricing



WRAPZ
Block 2

List Price: \$1,400

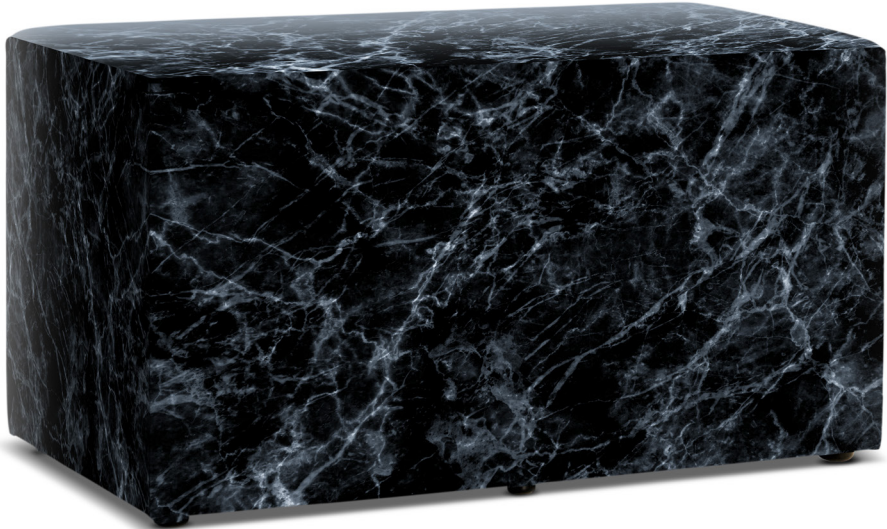
Custom artwork will yield an additiona \$250/net charge.

Standard Offering



1. Wood Block 2 / 2. Straw Seat

1.



2.



1. Black Marble 2 / 2. White Marble 2



1. Amilli / 2. Under the Sea 2

Service / Warranty

Servicing

Damaged components in need of replacement require an image of the damaged part and a reference to your order number. Please email this information to **support@sixinch.us** and we will be happy to provide replacement options.

** Visit **sixinchusa.com/warranty** for details on service and warranty terms and conditions.*

Warranty

Wood, steel, aluminum, plastic components, molded PE applications shall be free from defects in materials and workmanship for a period of five (5) years from the date of purchase. Softening of foam will occur through normal use and is not a manufacturing defect.



Quote

Online

Visit **sixinchusa.com**, create an account and submit your quote. A customer service representative will be in touch to guide you through the purchasing process or put you in touch with your regional rep.

Phone / Email

Call **855-577-2417** or email **support@sixinch.us**. Your regional rep contact information can also be found at **sixinchusa.com/connect**.

Brand Promise

We offer our customers endless creativity, backed by generations of industry experience. We deliver through quality, creativity and flexibility. We're here to help you create, entertain and work (a little). For more information visit **sixinchusa.com** or call us at **855-577-2417**.



SIXINCH® North America
901 East Madison Street, Goshen, IN 46528
855-577-2417
support@sixinch.us