

# WRAPZ

## Bubble 1

Designed by SIXINCH USA



Product Sheet / **WRAPZ - Bubble 1**

### WRAPZ - Bubble 1

Wrapz are a creative way to infuse your design into contract furniture. Our custom printed furniture allow creators to use their brand visuals on specified SIXINCH™ furniture pieces. We currently offer the Wrapz program for the following: Block, Block 2, Bubble, Gnarly Low Back and Gnarly High Back. Wrapz are perfect for educational spaces, events and corporate branding.

Shown Above:  
DDC Wrapz  
Water  
Sunrays  
Clouds

## General Information

### Material

Seat: Printed Vinyl or Fabric  
Base: Wood Base and Glides  
or Zipper

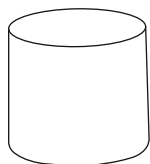
### Options

Shapes: Bubble 1, Block 1 and 2  
Print: Standard or Custom

### Environment

Suitable for Any Indoor  
Environment.

## Dimensions (in)



### WRAPZ

Bubble 1

SH 18.0 x D 18.0 x H 18.0

### Estimated Weight

The Wrapz - Bubble 1 estimated weight is 20lbs.

*\* Actual weight is based on base option selected.*

## Create-Your-Own

### 1. Material



Vinyl



Fabric

### 2. Base

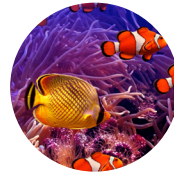


Wood Base  
w/Glides



Zipper

### 3. Pattern



Standard

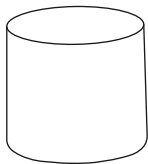


Custom

- **All prints require a (5) piece minimum order.**
- All (5) pieces have to be the same shape and base, but can be different prints.
- Custom artwork will yield a \$250/net charge.
- Lead time for standard prints is 6 weeks. Custom artwork extends lead time.



## WRAPZ-Bubble 1 Pricing



**WRAPZ**  
Bubble 1

List Price: \$825

Custom artwork will yield an additiona \$250/net charge.

## Standard Offering



1. Clouds / 2. Foliage / 3. Sunrays / 4. Water

Product Sheet / **WRAPZ - Bubble 1**

 All images shown can be found online at [sixinchusa.com](https://sixinchusa.com)



1.



2.



3.



4.



1. Birch / 2. Oak / 3. Orange / 4. Watermelon

Product Sheet / **WRAPZ - Bubble 1**



1.



2.



3.



1. Concrete / 2. Brown Cow / 3. Straw Bale

 All images shown can be found online  
at [sixinchusa.com](https://sixinchusa.com)

## Service / Warranty

### Servicing

Damaged components in need of replacement require an image of the damaged part and a reference to your order number. Please email this information to

**support@sixinch.us** and we will be happy to provide replacement options.

*\* Visit **sixinchusa.com/warranty** for details on service and warranty terms and conditions.*

### Warranty

Wood, steel, aluminum, plastic components, molded PE applications shall be free from defects in materials and workmanship for a period of five (5) years from the date of purchase. Softening of foam will occur through normal use and is not a manufacturing defect.



## Quote

### Online

Visit **sixinchusa.com**, create an account and submit your quote. A customer service representative will be in touch to guide you through the purchasing process or put you in touch with your regional rep.

### Phone / Email

Call **855-577-2417** or email **support@sixinch.us**. Your regional rep contact information can also be found at **sixinchusa.com/connect**.

## Brand Promise

We offer our customers endless creativity, backed by generations of industry experience.

We deliver through quality, creativity and flexibility. We're here to help you create, entertain and work (a little).

For more information visit **sixinchusa.com** or call us at **855-577-2417**.



SIXINCH® North America

901 East Madison Street, Goshen, IN 46528

855-577-2417

support@sixinch.us