

# Diamond Seat

## Lounge & Sofa

Designed by SIXINCH



Product Sheet / **Diamond Seat**

### Diamond Seat Collection

The glitz and glamour of the stone, meets a sophisticated, modern seat. The Diamond Seat features a raised dimension of diamond shapes on this surprisingly comfortable lounge chair. Made of soft foam coated in a special formula, the seat is designed for high traffic spaces including outdoors. Available in 30 different colors and two other sizes including sofas.

Shown Above:  
*Bench Sofa 1*  
*Bench Sofa 2*  
*FlexPlus™*

# General Information

### Foam

Foam Density Rating: 2.70 lb/ft  
ILD Rating: 65  
Test Weight: Up to 350lbs  
CAL117 Flame Retardant

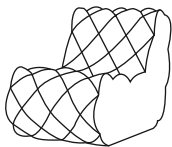
### Options

FlexPlus™: Custom Color Systems  
Ganging, Tethering, Weights: Yes

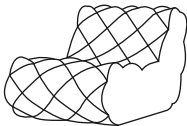
### Environment

Suitable for Any Indoor  
or Outdoor Environment.

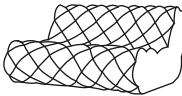
# Dimensions (in)



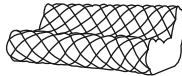
**Diamond Seat**  
Lounge  
**W** 18.0 x **D** 43.5 x **H** 27.0  
**SD** 27.5 x **SH** 14.0



**Diamond Seat 1**  
Lounge  
**W** 27.0 x **D** 43.5 x **H** 27.0  
**SD** 27.5 x **SH** 14.0



**Diamond Seat 2**  
Sofa  
**W** 54.0 x **D** 43.5 x **H** 27.0  
**SD** 27.5 x **SH** 14.0



**Diamond Seat 3**  
Sofa  
**W** 81.0 x **D** 43.5 x **H** 27.0  
**SD** 27.5 x **SH** 14.0

Product Sheet / Diamond Seat

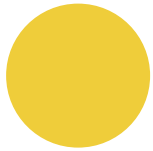
### Foam Tolerance

Foam Tolerances can vary. When placing your order,  
please ensure tolerances listed below fit into specified space.

- 0" to 2"** = +/- 1/16"
- 2" to 36"** = +/- 1/8"
- 36" or more** = +/- 1/4"
- Angles** +/- 1°

## Standard FlexPlus™ Colors

### Primary



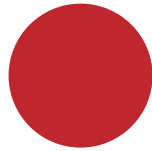
Yellow



White



Ultramarine



Red



Black



Anthracite

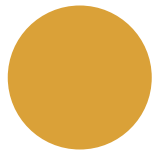
### Vibrant



Pink



Orange



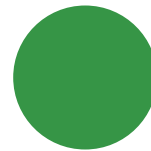
Saffron



Purple



Light Green

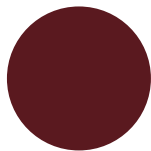


Green

### Earthtones



Turquoise



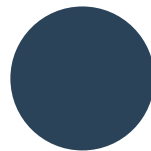
Ruby



Robins Egg



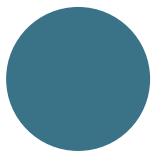
Pewter



Ocean



Midnight



Light Blue



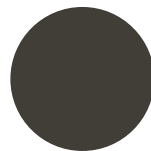
Smoke



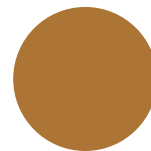
Grape



Fern



Dark Grey

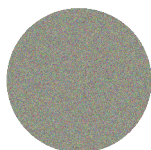


Camel

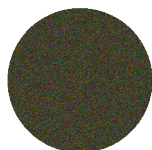
### Metallics



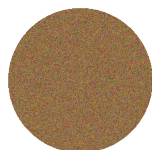
Shadow



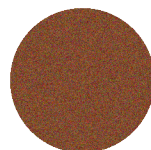
Silver



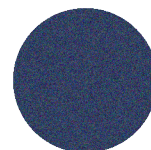
Olive



Gold



Copper



Space

We Match Custom Color Systems Including CMYK, PMS, RAL, NCS

### ☀ U.V. Resistant

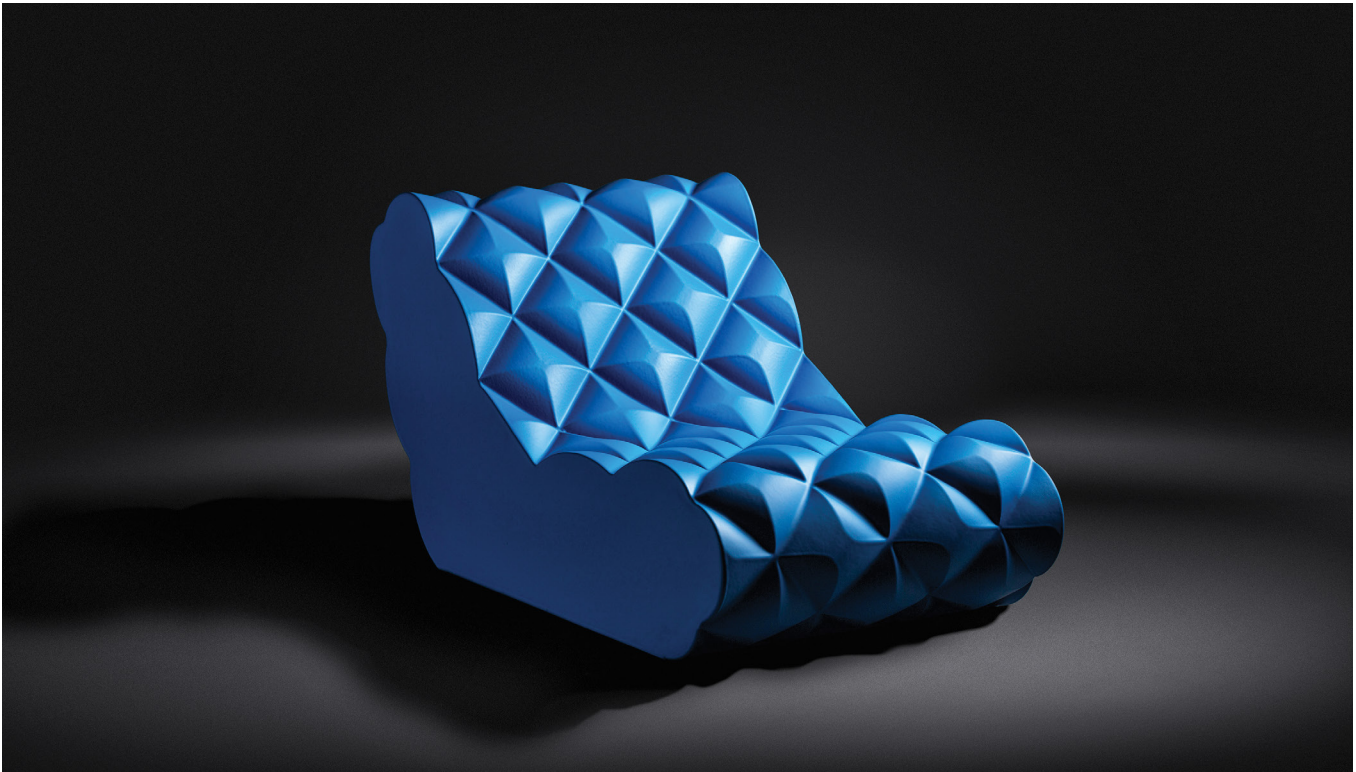
The FlexPlus™ coating is suitable for indoor or outdoor application. The color layer features U.V. Inhibitors found in automotive paint, providing a durable finish that can withstand the elements.





Product Sheet / **Diamond Seat**





Product Sheet / **Diamond Seat**

📷 All images shown can be found online  
at [sixinchusa.com](http://sixinchusa.com)

## Service / Warranty

### Servicing

Damaged components in need of replacement require an image of the damaged part and a reference to your order number. Please email this information to **support@sixinch.us** and we will be happy to provide replacement options.

### Upholstery Warranty

SIXINCH warrants that upholstery applications shall be free from defects in materials and workmanship for a period of five (5) years from the date of purchase. Softening of foam will occur through normal use and is not a manufacturing defect.



*\* Visit **sixinchusa.com/warranty** for details on service and warranty terms and conditions.*

### FlexPlus™ Warranty

FlexPlus™ coated surfaces shall be free of defects in materials and workmanship for a period of three (3) years. FlexPlus coated products intended to be used in non-standard furniture applications (i.e. stood on, walked on, or in “heavy use”) shall be free of defects in material and workmanship for a period of one (1) year. FlexPlus coated products intended to be used in applications other than furniture uses (i.e. as “toys”, building blocks, or without a wood base/glides) will not be covered under warranty.



## Quote

### Online

Visit **sixinchusa.com**, create an account and submit your quote. A customer service representative will be in touch to guide you through the purchasing process or put you in touch with your regional rep.

### Phone / Email

Call **855-577-2417** or email **support@sixinch.us**. Your regional rep contact information can also be found at **sixinchusa.com/connect**.

## Brand Promise

We offer our customers endless creativity, backed by generations of industry experience.  
We deliver through quality, creativity and flexibility. We're here to help you create, entertain and work (a little).  
For more information visit **sixinchusa.com** or call us at **855-577-2417**.



SIXINCH® North America  
901 East Madison Street, Goshen, IN 46528  
855-577-2417  
support@sixinch.us