

ALMG

Table

Designed by Pieter Maes



Product Sheet / **ALMG Table**

ALMG Table

Bring an element of origami into your space with the ALMG Table, made from powder-coated steel. The ALMG table and chair will bring a bold, elegant solution to any commercial office or outdoor space. With a weight of 44 pounds, the ALMG side table means business. The perfectly bent steel table comes in six colors – candy red, silver, black, white, golden poppy or “lectra” blue.

Shown Above:
ALMG Table
Silver Powdercoat
ALMG Chair
Silver Powdercoat
Camira Blazer

General Information

Material

Table: Powder Coated Steel

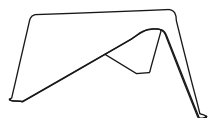
Options

Powder Coat: White, Black, Copper, Blush, Honey, Seafoam, Pigeon Blue, Signal Grey

Environment

Suitable for Any Indoor or Outdoor Environment.

Dimensions (in)



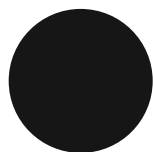
ALMG

Table

W 32.0 x D 32.0 x H 14.0

Color / Finish

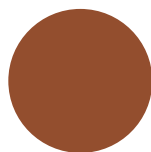
Powder Coat Colors



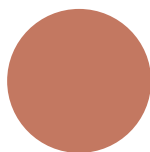
Black
RAL 9004



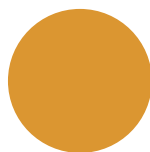
White
RAL 9016



Copper
RAL 8029



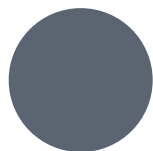
Blush
RAL 3012



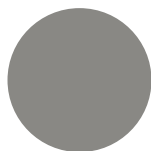
Honey
RAL 1034



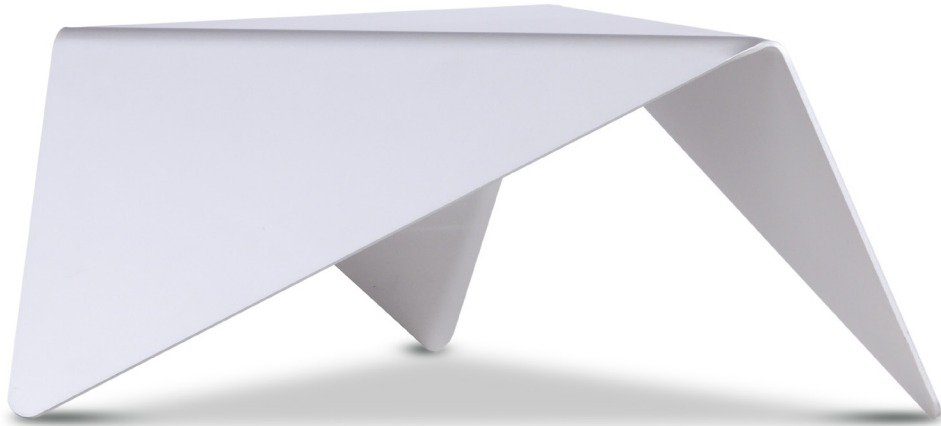
Seafoam
RAL 6019



Pigeon Blue
RAL 5014



Signal Grey
RAL 7004



Product Sheet / **ALMG Table**

 All images shown can be found online
at sixinchusa.com

Service / Warranty

Servicing

Damaged components in need of replacement require an image of the damaged part and a reference to your order number. Please email this information to **support@sixinch.us** and we will be happy to provide replacement options.

** Visit **sixinchusa.com/warranty** for details on service and warranty terms and conditions.*

Warranty

Wood, steel, aluminum, plastic components, molded PE applications shall be free from defects in materials and workmanship for a period of five (5) years from the date of purchase. Softening of foam will occur through normal use and is not a manufacturing defect.



Quote

Online

Visit **sixinchusa.com**, create an account and submit your quote. A customer service representative will be in touch to guide you through the purchasing process or put you in touch with your regional rep.

Phone / Email

Call **855-577-2417** or email **support@sixinch.us**. Your regional rep contact information can also be found at **sixinchusa.com/connect**.

Brand Promise

We offer our customers endless creativity, backed by generations of industry experience.
We deliver through quality, creativity and flexibility. We're here to help you create, entertain and work (a little).
For more information visit **sixinchusa.com** or call us at **855-577-2417**.



SIXINCH® North America
901 East Madison Street, Goshen, IN 46528
855-577-2417
support@sixinch.us