

# Bubble Topper

## Table

Designed by  
SIXINCH USA



Product Sheet / **Bubble Topper**

### **Bubble Topper**

Transform your SIXINCH® Bubble from stool to side table with the Bubble Topper. This specially crafted metal piece nests perfectly over top of the Bubble 1, secured by functional tabs that can feature a cutout of your logo. We also offer 5 standard powder coat finishes to further customize the topper. The topper is a heavy, durable steel built to last in any environment.

Shown Above:  
*Bubble Topper*  
*Silver Powder Coat*  
*Bubble*  
*Camira Blazer*

## General Information

### Material

Table: Powder Coated Steel

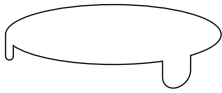
### Options

Powder Coat: White, Black, Copper, Blush, Honey, Seafoam, Pigeon Blue, Signal Grey

### Environment

Suitable for Any Indoor or Outdoor Environment.

## Dimensions (in)



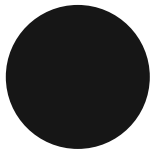
### Bubble Topper

Table

W 32.0 x D 32.0 x H 14.0

## Color / Finish

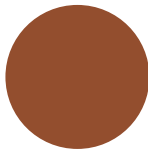
### Powder Coat Color



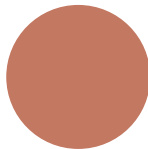
Black  
RAL 9004



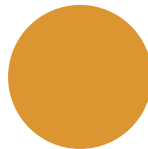
White  
RAL 9016



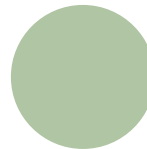
Copper  
RAL 8029



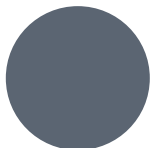
Blush  
RAL 3012



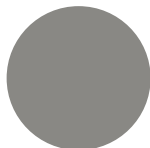
Honey  
RAL 1034



Seafoam  
RAL 6019



Pigeon Blue  
RAL 5014



Signal Grey  
RAL 7004



Product Sheet / **Bubble Topper**

📷 All images shown can be found online  
at [sixinchusa.com](https://www.sixinchusa.com)

## Service / Warranty

### Servicing

Damaged components in need of replacement require an image of the damaged part and a reference to your order number. Please email this information to **support@sixinch.us** and we will be happy to provide replacement options.

*\* Visit **sixinchusa.com/warranty** for details on service and warranty terms and conditions.*

### Warranty

Wood, steel, aluminum, plastic components, molded PE applications shall be free from defects in materials and workmanship for a period of five (5) years from the date of purchase. Softening of foam will occur through normal use and is not a manufacturing defect.



## Quote

### Online

Visit **sixinchusa.com**, create an account and submit your quote. A customer service representative will be in touch to guide you through the purchasing process or put you in touch with your regional rep.

### Phone / Email

Call **855-577-2417** or email **support@sixinch.us**. Your regional rep contact information can also be found at **sixinchusa.com/connect**.

## Brand Promise

We offer our customers endless creativity, backed by generations of industry experience.  
We deliver through quality, creativity and flexibility. We're here to help you create, entertain and work (a little).  
For more information visit **sixinchusa.com** or call us at **855-577-2417**.



SIXINCH® North America  
901 East Madison Street, Goshen, IN 46528  
855-577-2417  
support@sixinch.us