



Cubik Collection

The Cubik Collection blends SIXINCH's signature flair for designing playful sculpture-like furniture that isn't just fun to look at, but also comfortable to use. Relax in the Cubik with support from the defined square shape of the armrests. Bench seating is also available. Cubik is built with high quality foam wrapped around a wood frame and upholstered with professional techniques.

Shown Above:
Island Lounge
in Camira Blazer

General Information

Material

Structure: Foam Wrapped,
Upholstered Wood Frame
Legs: Wood or Powdercoate Metal

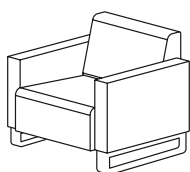
Options

Fabric: COM or Graded-In
*Visit sixinchusa.com for
Graded-In Pricing

Environment

Suitable for any Indoor
Environment.

Dimensions (in)

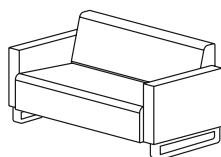


Cubik

Lounge Chair

W 32.0 x **D** 29.5 x **H** 29.5

SD 20.5 x **SH** 17.5

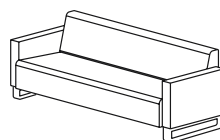


Cubik

Settee

W 56.0 x **D** 29.5 x **H** 29.5

SD 20.5 x **SH** 17.5

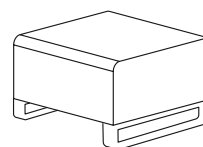


Cubik

Sofa

W 80.0 x **D** 29.5 x **H** 29.5

SD 20.5 x **SH** 17.5

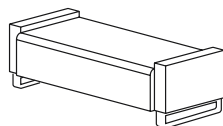


Cubik

Ottoman

W 24.0 x **D** 24.0 x **H** 17.5

SD 24.0 x **SH** 17.5

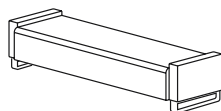


Cubik

Bench 56

W 56.0 x **D** 24.0 x **H** 20.0

SD 24.0 x **SH** 17.5

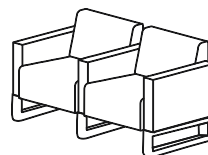


Cubik

Bench 80

W 80.0 x **D** 24.0 x **H** 20.0

SD 24.0 x **SH** 17.5

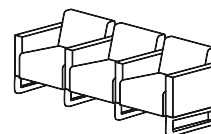


Cubik

Connect 2

W 59.5 x **D** 29.5 x **H** 29.5

SD 20.5 x **SH** 17.5



Cubik

Connect 3

W 59.5 x **D** 29.5 x **H** 29.5

SD 20.5 x **SH** 17.5



Estimated Weight

The Cubik Lounge has an estimated weight of 65 lbs. All other Cubik weight is TBD.

Fabric Partners

Graded-In Partners

Anzea	Maharam
Camira	Mayer
Carnegie	Momentum
C.F. Stinson	Pallas Textiles
EnviroLeather	Ultrafabrics
Gabriel	Unika Vaev
KB Contract	

Zoning Options



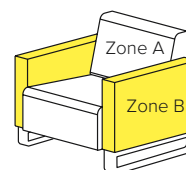
Two Tone

Fabric 1

Zone A - Back and Seat

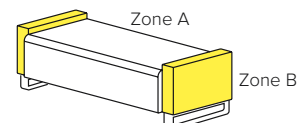
Fabric 2

Zone B - Arms



Quilting

Zone A Only



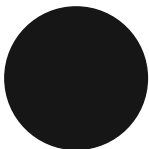
Color / Finish

Wood Sled



Beech

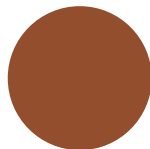
Powdercoat Sled



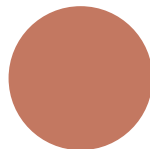
Black
RAL 9004



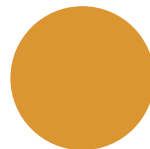
White
RAL 9016



Copper
RAL 8029



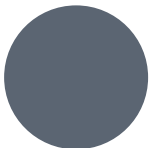
Blush
RAL 3012



Honey
RAL 1034



Seafoam
RAL 6019



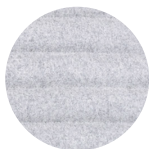
Pigeon Blue
RAL 5014



Signal Grey
RAL 7004

Quilting Patterns

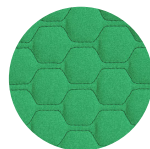
Standard



Channel



Diamond



Hex



Hourglass

Non-Standard



Cinch



Circle



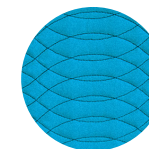
Diamond Wave



Diamond 2



Diamond Point



Wave



Product Sheet / **Cubik Collection**



Product Sheet / **Cubik Collection**



Product Sheet / **Cubik Collection**

Power Options

Integrated Solutions

We have partnered with Byrne to offer the highest quality, design-forward power supplies in the industry.

** Contact us for pricing and availability.*

Salt®

Available in Round or Square



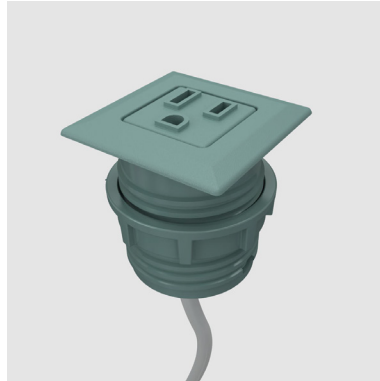
Color:



Size: 1.75in Diameter
Finish: Molded Plastic
Technology Specs: 2 Amps Per Port
Configurations: 1 USB, 1 USB-C 18W,
1 USB-C 60W, 1 USB A+C
Cord Length: 72in
Features: Spill-Proof Technology

Pepper®

Available in Round or Square



Color:

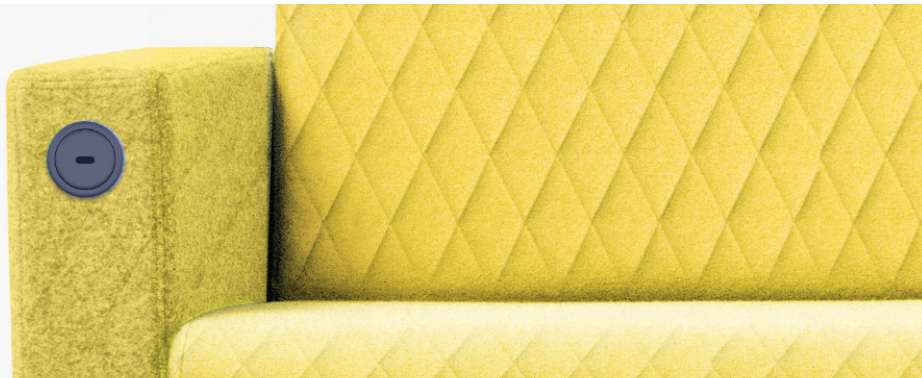


Size: 1.75in Diameter
Finish: Molded Plastic
Technology Specs: 15A / 125V
Configurations: AC Type B
Cord Length: 72in
Features: Spill-Proof Technology

Product Sheet / **Cubik Collection**



**Design Power
Into Your Furniture.**



Service / Warranty

Servicing

Damaged components in need of replacement require an image of the damaged part and a reference to your order number. Please email this information to **support@sixinch.us** and we will be happy to provide replacement options.

** Visit **sixinchusa.com/warranty** for details on service and warranty terms and conditions.*

Upholstery Warranty

SIXINCH warrants that upholstery applications shall be free from defects in materials and workmanship for a period of five (5) years from the date of purchase. Softening of foam will occur through normal use and is not a manufacturing defect.



Quote

Online

Visit **sixinchusa.com**, create an account and submit your quote. A customer service representative will be in touch to guide you through the purchasing process or put you in touch with your regional rep.

Phone / Email

Call **855-577-2417** or email **support@sixinch.us**. Your regional rep contact information can also be found at **sixinchusa.com/connect**.

Brand Promise

We offer our customers endless creativity, backed by generations of industry experience. We deliver through quality, creativity and flexibility. We're here to help you create, entertain and work (a little). For more information visit **sixinchusa.com** or call us at **855-577-2417**.



SIXINCH® North America
901 East Madison Street, Goshen, IN 46528
855-577-2417
support@sixinch.us