

Tapa Square

Modular Lounge

Designed by Mac Stopa



Product Sheet / **Tapa Square**

Tapa

The contemporary office needs spaces with an informal lounge atmosphere where employees are able to hold spontaneous meetings in small groups or for just relaxing. This requirement is met by Tapa – a system of modular poufs with organic geometric forms designed by Mac Stopa.

This unique product combines a striking look with clever functionality. A solution whose basic element is an island consisting of poufs that turn on a pivot, Tapa combines the functionality of a sofa, chair, side table, and stool into one unique modular system.

Shown Above:
Tapa
Camira Blazer

General Information

Material

Frame: Wood
Cushion: Upholstered Foam
Rotation: Metal Cylinder

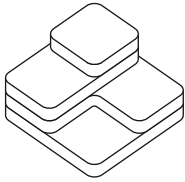
Options

Fabric: Graded In / COM
Fabric Zones : 4

Environment

Suitable for Any Indoor Environment.

Dimensions (in)



Tapa Square

Modular Lounge

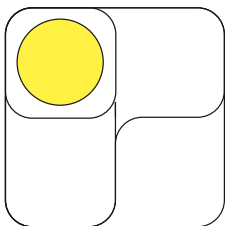
W 36.0 x **D** 36.0 x **H** 25.0
Each Section is 6"



Estimated Weight

The Tapa Square has an estimated weight of 165 lbs.

Rotation



Zoning Options

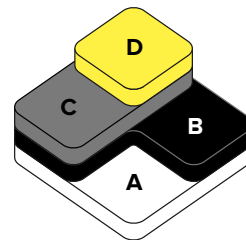


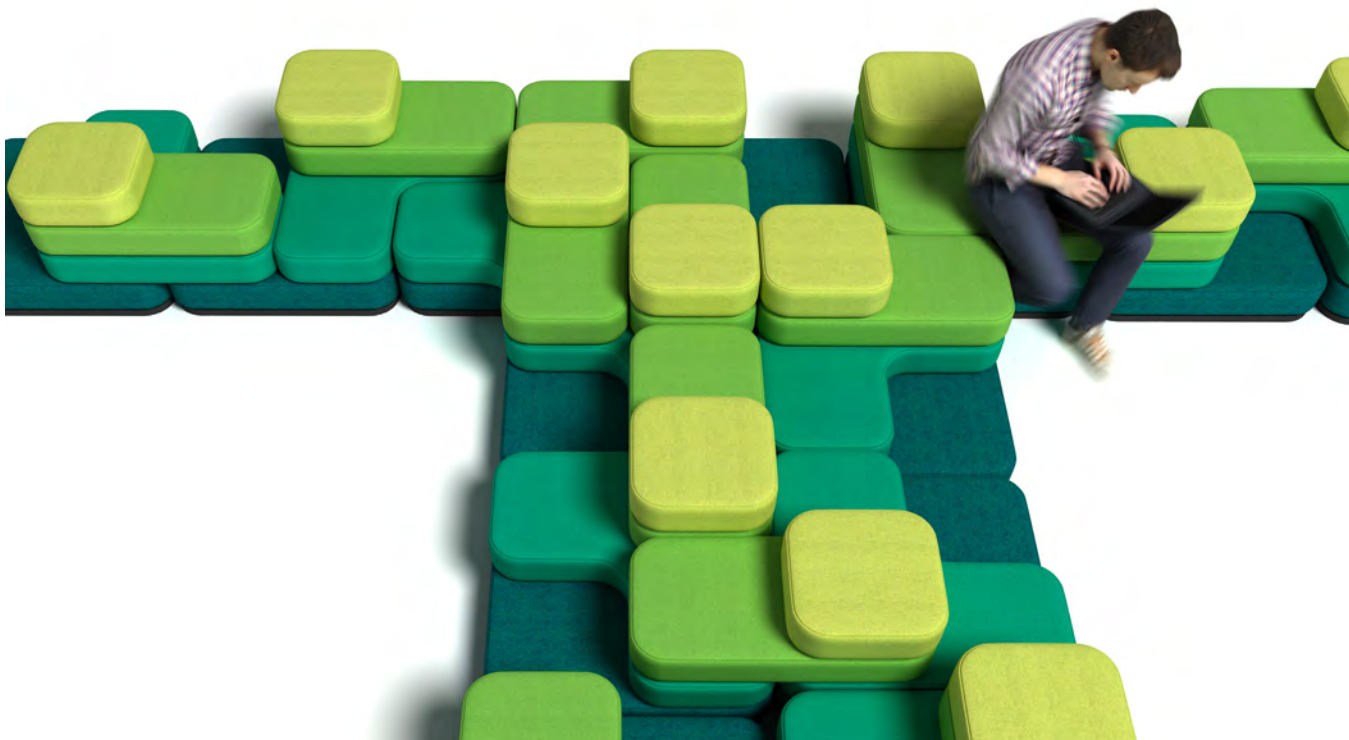
Quad-Tone

Fabric 1 / Zone A
Fabric 2 / Zone B
Fabric 3 / Zone C
Fabric 4 / Zone D

Fabric Required

Zone A / 2 LY
Zone B / 2 LY
Zone C / 1.5 LY
Zone D / 1 LY





Product Sheet / **Tapa Square**


 All images shown can be found online
 at sixinchusa.com



Product Sheet / **Tapa Square**

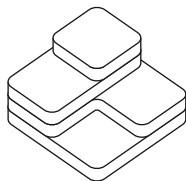
📷 All images shown can be found online
at sixinchusa.com



Product Sheet / **Tapa Square**

📷 All images shown can be found online
at [sixinchusa.com](https://www.sixinchusa.com)

Tapa Details



Model: Tapa Square
Base Material: Wood
Base Finish: Upholstery

Cylinder: Metal
Layers: 4

Seat Options: COM, Graded-In

Service / Warranty

Servicing

Damaged components in need of replacement require an image of the damaged part and a reference to your order number. Please email this information to **support@sixinch.us** and we will be happy to provide replacement options.

* Visit **sixinchusa.com/warranty** for details on service and warranty terms and conditions.

Warranty

Wood, steel, aluminum, plastic components, molded PE applications shall be free from defects in materials and workmanship for a period of five (5) years from the date of purchase. Softening of foam will occur through normal use and is not a manufacturing defect.



Quote

Online

Visit **sixinchusa.com**, create an account and submit your quote. A customer service representative will be in touch to guide you through the purchasing process or put you in touch with your regional rep.

Phone / Email

Call **855-577-2417** or email **support@sixinch.us**. Your regional rep contact information can also be found at **sixinchusa.com/connect**.

Brand Promise

We offer our customers endless creativity, backed by generations of industry experience.
We deliver through quality, creativity and flexibility. We're here to help you create, entertain and work (a little).
For more information visit **sixinchusa.com** or call us at **855-577-2417**.



SIXINCH® North America
901 East Madison Street, Goshen, IN 46528
855-577-2417
support@sixinch.us