

Tubular

Lounge Chair

Designed by Populous®

tubular
SIXINCH x POPULOUS



Product Sheet / **Tubular**

Tubular

The Tubular chair rethinks the role of the pillow. All about softness, the chair's large, overstuffed seat and back cushions feature layers of mixed density foam and are every bit as comfortable as they appear. The burly tube frame also adds a bit of whimsy with its smooth bends and cheerful powder coat options. The distinctive accent band adds a little dimension and the option for a pop of color.

Shown Above:
Tubular in Leather
Copper Powder
Coat Base

General Information

Material

Back: Upholstered Foam
Seat: Upholstered Foam
Base: Powder Coated Steel

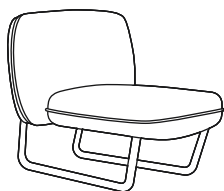
Options

Seat: COM, COL
Base: 8 Powdercoat Colors

Environment

Suitable for Any Indoor Environment.

Dimensions (in)



Tubular

Lounge Chair

W 37.5 x **D** 34.0 x **H** 34.0

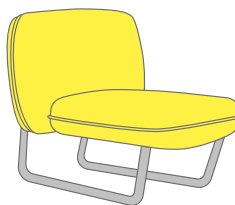
SD 23.5 x **SH** 19.0



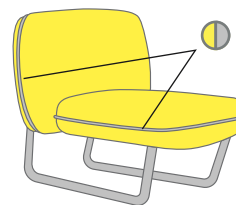
Estimated Weight

The Tubular has an estimated weight of 52 lbs.

Fabric Zoning



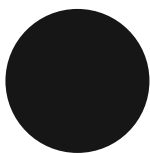
Solid (Zone A)



Solid + Accent (Zone B)

Color / Finish

Base Finishes



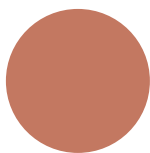
Black
RAL 9004



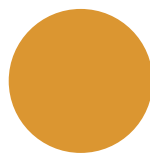
White
RAL 9016



Copper
RAL 8029



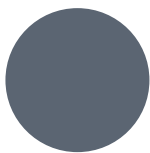
Blush
RAL 3012



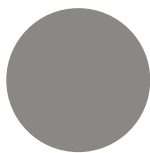
Honey
RAL 1034



Seafoam
RAL 6019



Pigeon Blue
RAL 5014



Signal Grey
RAL 7004



Product Sheet / **Tubular**

📷 All images shown can be found online
at sixinchusa.com



Product Sheet / **Tubular**



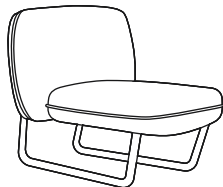
Product Sheet / **Tubular**



Product Sheet / **Tubular**

All images shown can be found online
at sixinchusa.com

Tubular Details



Model: Tubular
Base Material: Steel
Base Finish: 8 Powder Coat Colors

Back: Multi-Density Foam
Seat: Multi-Density Foam

Seat Options: COM, COL

Stacking: No

Service / Warranty

Servicing

Damaged components in need of replacement require an image of the damaged part and a reference to your order number. Please email this information to **support@sixinch.us** and we will be happy to provide replacement options.

* Visit **sixinchusa.com/warranty** for details on service and warranty terms and conditions.

Warranty

Wood, steel, aluminum, plastic components, molded PE applications shall be free from defects in materials and workmanship for a period of five (5) years from the date of purchase. Softening of foam will occur through normal use and is not a manufacturing defect.



Quote

Online

Visit **sixinchusa.com**, create an account and submit your quote. A customer service representative will be in touch to guide you through the purchasing process or put you in touch with your regional rep.

Phone / Email

Call **855-577-2417** or email **support@sixinch.us**. Your regional rep contact information can also be found at **sixinchusa.com/connect**.

Brand Promise

We offer our customers endless creativity, backed by generations of industry experience.

We deliver through quality, creativity and flexibility. We're here to help you create, entertain and work (a little).

For more information visit **sixinchusa.com** or call us at **855-577-2417**.



SIXINCH® North America

901 East Madison Street, Goshen, IN 46528

855-577-2417

support@sixinch.us