



Integrating Art, Culture & Furniture



01 **ROCKY PLUSH**

02-05 **ELEVATE**

06-09 **SATTEL**

10 **TWIST**

11 **ROCK ELEMENT**

12 **SOLE**

13 **MIMMO**

14 **NUKE**

15 **JUKE**

16 **BUBBLE, HEX, BLOCK**

17 **LOUIS BARSTOOL, BARSTOOL**

18 **KONCEPT LIGHTING**

19 **CUSTOM SOLUTIONS**

OUR DNA

We build iconic environments that are distinctly original. Our team of designers and engineers are detailed to a fault. We have the ability to not only "dream" but also "do". Every piece that bears the SIXINCH label is held to the highest standards in the furniture industry.



ROCKY PLUSH

LOUNGE CHAIR

Plush
Indoor Only

Our popular Rocky Chair is now available in an upholstered version. Add an extra layer of comfort with our soft indoor option that can be specified in COM or a number of graded materials. The Rocky Chair Family consists of Molded PE, FlexPlus™ and fully upholstered versions. Accessories are also available.



Designed by Rainer Mutsch



100% RECYCLED PE SHELL



COM OR GRADED MATERIAL



LIGHTWEIGHT

INDOOR + OUTDOOR

NEOCON 2023 OFFICIAL LAUNCH

02

POPULOUS x  sixinch

ELEVATE

MODULAR COLLECTION
24" Work Height Shown

WORK HOW YOU WANT, WHERE YOU WANT

Elevate transforms a workplace to enhance the experience of the future,
creating new spaces and opportunities for flexible work.

Designed by SIXINCH USA & POPULOUS



18"
Lounge



24"
Work



24”

A HIGHER SIT THAT IS MORE COMFORTABLE FOR COMMUNICATIONS

Engage eye-to-eye in collaborative meetings with those standing around you.

Good design responds to the needs of its environment. Excellent design propels an environment forward, infusing it with new energy, functional innovation and forward-thinking creativity. Before Elevate, designers were often forced to choose between a dining ensemble and an outdoor lounge grouping. Most dining furniture is not comfortable enough for extended solitary or group work, and lounge furniture is typically too low to support a working posture or collaboration with digital or analog tools and materials.

A swell of residential and hospitality influence on commercial and institutional designs had already begun to dissolve our spaces into something new in 2019. Then, months of isolation and remote work reminded us what we really needed to be our best: We just need each other, and good tools that work properly.

The casual, cooperative, mobile-work, posture-friendly, familiar face we were already seeking has arrived and is expertly appointed to gather us outside for work, study, and relaxation. All at once.

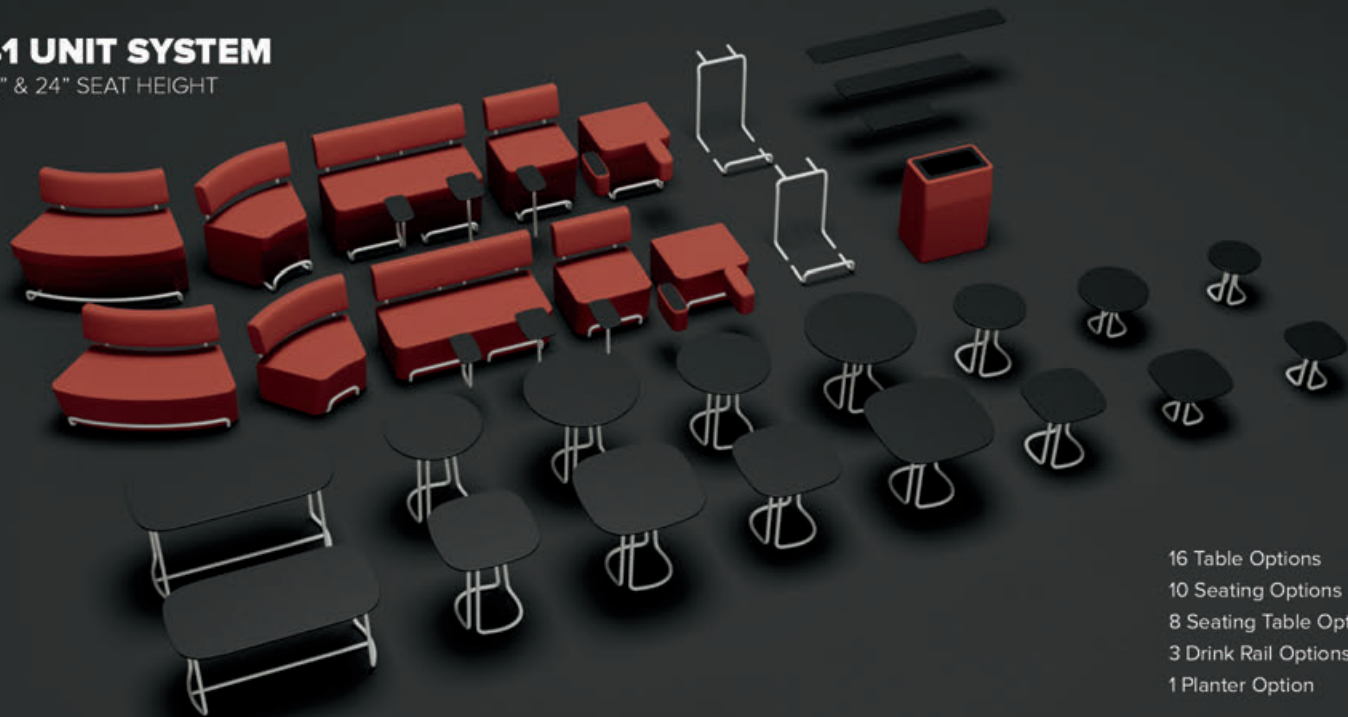


CONFIGURE YOUR WAY TO FIT ANY SPACE OR ENVIRONMENT

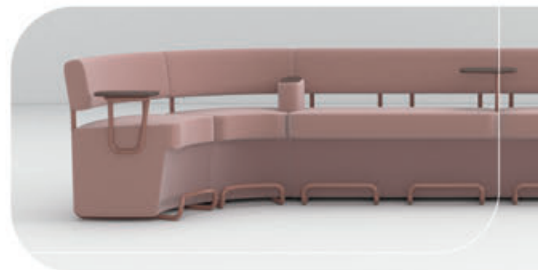
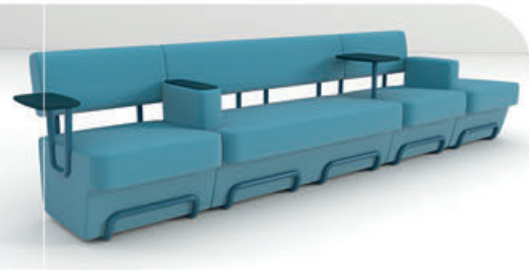
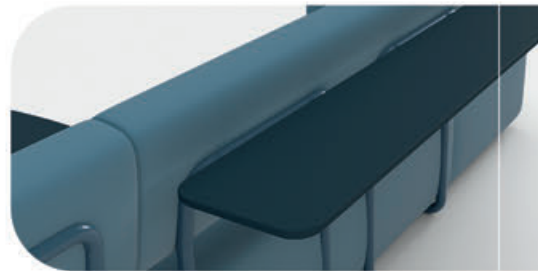
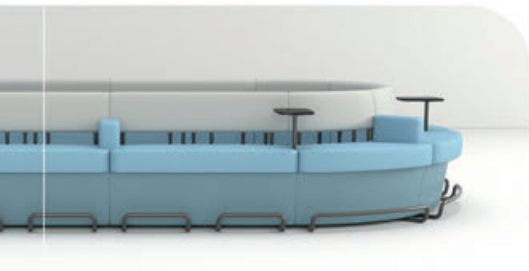
Elevate is designed to emphasize comfortable productivity.
Working outdoors has never felt so good.

41 UNIT SYSTEM

18" & 24" SEAT HEIGHT



- 16 Table Options
- 10 Seating Options
- 8 Seating Table Options
- 3 Drink Rail Options
- 1 Planter Option



INDOOR + MOBILE

NEOCON 2023 OFFICIAL LAUNCH



COMMON OBJECT x  sixinch

06

**EASILY STACK, CARRY
& COLLABORATE**



SATTEL

MOBILE SEATING SYSTEM



+ MOBILITY

The Sattel Wagen adds mobility to classrooms and workspaces. Easily transition from one location to another, indoors or outside.



**SATTEL
WAGEN**

Powder Coat
Handle & Frame
Colors



Seat Panel
Colors



The Wagen features industrial grade casters suited for rolling over most terrain. The frame is powder coated steel. Seat and side panels are made of a tri-plastic material.

CHANGE YOUR LEARNING & WORKING ENVIRONMENT ON THE FLY

BANK ON IT



The Sattel Bank is a static seating solution that offers storage, power and comfort. Sattel Bank serves as a stylish, powered bench that compliments individual Sattels. Storage of Sattel units is accomplished with ease by stacking them on the Bank - creating an aesthetically pleasing solution..

**SATTEL
BANK**

Powder Coat
Leg Colors



Integrated
Power



The Sattel Bank is indoor only and available with graded-in material or can be specified with COM.

ADD FUNCTION TO YOUR BENCH SEATING WITH THE SATTEL BANK

A MOBILE SEATING SOLUTION WITH FORM & FUNCTION IN MIND

Designed by SIXINCH USA & COMMON OBJECT

Quiet Handle
Intentionally integrated
into the design as a
functional accent.

Layered Foam
Support and comfort are
achieved through the use
of an engineer specified
layered foam configuration.

Glides
Protect legs from impact
and friction damage.

Tolerance

In order to stack correctly and
easily be removed, the design
and production tolerances are
met at a critical level.



Molded Ply Frame

Strong internal structure
supports adult weight
requirements.

Tri-Tone Material Option



TWIST

LOUNGE & POUF

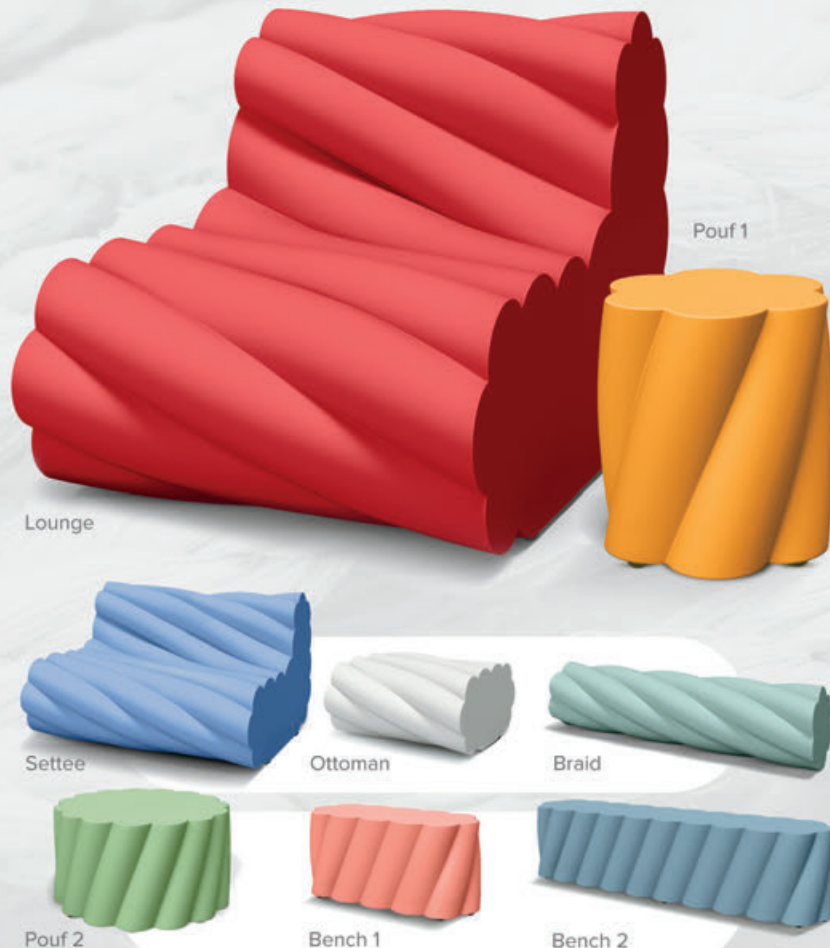
Indoor /
Outdoor

Twist is our new FlexPlus family for 2023. Designed to look like a rope, Twist adds flowing dimension to lounge, bench and pouf seating. Much like our other FlexPlus patterns, Twist can be applied to wall panels, unique seating and more.



NeoCon
2023
USA DEBUT

Designed by SIXINCH & Studio Högl Borowski



ROCK ELEMENT

BENCH COLLECTION

Indoor /
Outdoor

A Rock Element is a polygonal rock bench made of FlexPlus™ coated foam. It has been designed as a multifunctional piece that offers 6 different sizes and shapes. Rock Elements are perfect for use in high-traffic spaces like retail, education and common areas. Fasten the lightweight benches in place or allow free mobility and design flexibility.



Designed by Rainer Mutsch

11

30 STANDARD FLEXPLUS COLORS



OUTDOOR RATED



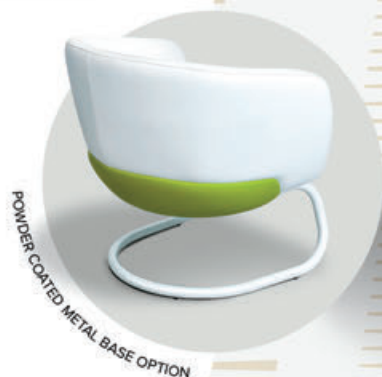
QUICKSHIP READY



SOLE LOUNGE

Indoor

Inspired by footwear and its expression of personality, the Sole chair captures the individuality and identity shoes provide. The SIXINCH brand of customization and uniqueness shines through with various colorways and base options that explore different styles.



Designed by SIXINCH USA & POPULOUS



MIMMO

TABLES

Indoor

The highly configurable Mimmo Collection offers an array of tops, bases and sizes. A clean aesthetic combined with sturdy materials form the optimal table solution. Pair Mimmo with any of our seating options to create an outstanding usable space.



Designed by Stiwood



HEIGHT & WIDTH OPTIONS



METAL & WOOD LEG OPTIONS

3rd

SMARTMATE 3DL TOP 13

Shell Colors - US In-Stock



NUKE

CAFE CHAIR

Indoor /
Outdoor

You'll be charmed by this small chair featuring a sleek Italian design that combines comfort, flexibility and style to perfection! Durable and stackable, the Nuke plastic indoor/outdoor chair can be easily moved between spaces – whether it's an outdoor terrace, a conference room, a cafeteria or a waiting room.



Roccia Color
100% Recycled

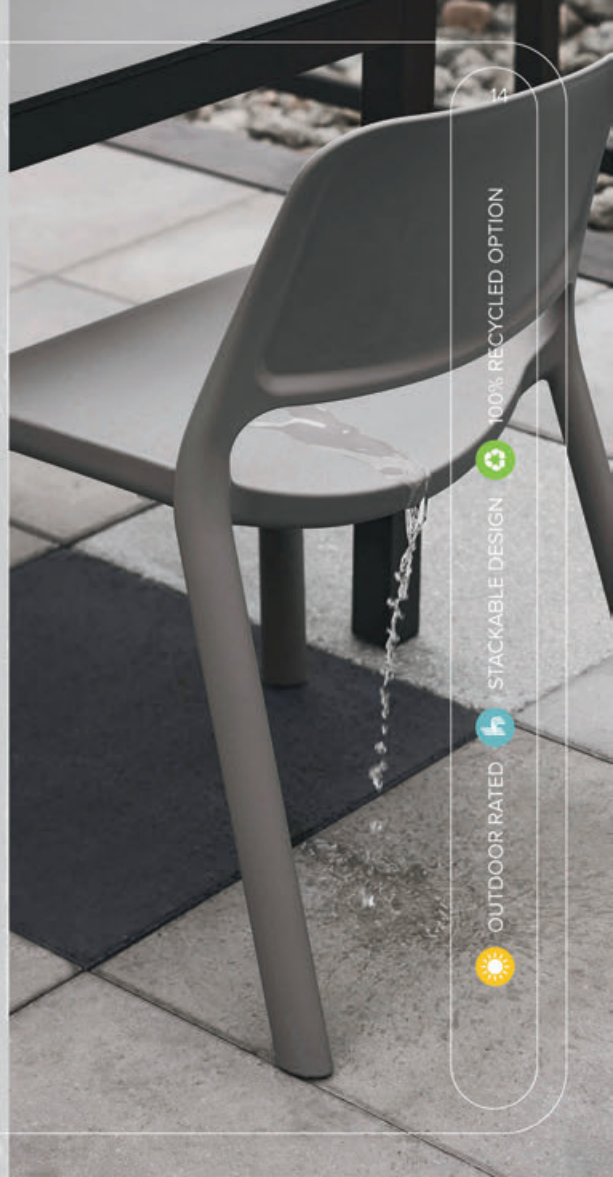
Designed by ALBA - ORLANDINI



Arm



Armless



100% RECYCLED OPTION



STACKABLE DESIGN



OUTDOOR RATED



Top Colors



JUKE

TABLE

Indoor/
Outdoor

Juke is a highly durable outdoor table that uses a unique MDF powder coating allowing it to stay light-weight and cost effective. The Juke base has a durable matte grey finish with weather resistant coating. For outdoor spaces, we pair Juke with our Nuke molded chair to create a visual that is highly functional.



Designed by Nowy Styl



POWDER COATED MDF TOP



WEATHER RESISTANT BASE



QUICKSHIP READY

15

BUBBLE, HEX & BLOCKS

POUFS

Indoor /
Outdoor

The SIXINCH Pouf Collection is packed with several shapes, sizes and finishes. Our poufs are designed to work in unison with our larger seating solutions. Whether you are looking to accent your space with mobile seating, or complete a larger scale environment we have a pouf that works.



Designed by SIXINCH



Bubble



Hex Pouf



Block



LOUIS BARSTOOL, BARSTOOL

BARSTOOLS

Our standard Barstool is a strong and versatile option when outfitting your space. Barstool is easily customizable with a COM, Graded or FlexPlus cushion and a powder coated base. The Louis Barstool features a classic design with a modern twist - FlexPlus coating.

Indoor /
Outdoor

Louis
Barstool

Barstool



Designed by SIXINCH



KONCEPT

LIGHTING

Indoor

The SIXINCH brand carries 7 unique lighting solutions designed and manufactured by Koncept. Koncept has developed a line of elegant LED lamps and lighting elements with the discriminating consumer in mind. Winners of multiple awards, their lighting solutions set the highest standards in the industry.



Designed by Product Design³

Gravy



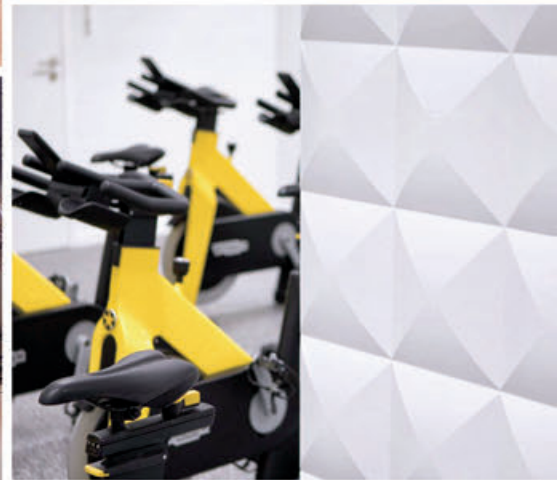


CUSTOM SEATING SOLUTIONS


Indoor/
Outdoor

With our FlexPlus™ coated foam and custom upholstery capabilities, we offer the ability to design custom seating and benching to fit most spaces. We've created everything from small stadium seat pads to fully padded rooms. If you have a need, we'll work with you to come up with a solution that works best for your budget and space.









Our furniture makes a bold statement that draws us all together.



"We all have creativity in the 'space between our ears,'
A space 150mm wide or to put it more illustrative –
A good six inches."

Belgium / China / Japan / India / Middle East / Turkey / Africa / Argentina / Colombia / ...